



Noteworthy Entertainment



A special Readers' Theatre production streamed live via Zoom on Jan. 29-30, 2021

SouthBayMT.com • 408-266-4734

Director's Note

The African American experience is not a monolith. Our experience does not stop at our pain and tragedy. We are diverse and experience joy, prosperity and love throughout the majority of our lives. In *Rachel*, we find a young Black woman who learns jarring truths about her family and the world in which they live. At some point in the life of every woman, there is a choice made about becoming a mother. Usually it is dictated by biology, education, financial integrity, and – in the case of Black potential mothers – skin color.

What are the social ramifications of bringing a Black child into this world? It is a decision that should not be taken lightly, in *Rachel*'s early 1900s or in our current 2021. Many of the consequences are the same – from George Floyd to Emmett Till. Black mothers' constant worry is that their child will be assumed guilty because they are at the wrong place and melanated.

Just two weeks ago our nation's leader was an individual who sought to divide and dehumanize individuals based upon ethnic origin. It is this consistent racist ideology that has stalled America. Yet the arts have the power to heal. At Joe Biden's inauguration, we watched 22-year-old poet laureate Amanda Gorman (perhaps our generation's Angelina Grimké) take center stage with her moving poem, which asserts:

"We've learned that quiet isn't always peace,
And the norms and notions of what 'just is'
Isn't always just-ice."

The play *Rachel* was written in 1916, one of the very first plays authored and produced by a biracial Black woman playwright. It is the story of a Black family's insistence of dignity, intellect, and survival. Terrorized by the racism of their former Southern community, matriarch Mrs. Loving moves her two children to the North in hopes of leaving the past behind. But when her daughter, an effervescent Rachel, brings home a young boy named Jimmy, Mrs. Loving is forced to reveal the truth that will shatter Rachel's rose-colored dreams of motherhood and starting her own family.

Considered a pioneering Black American woman playwright, Angelina Grimké expertly documented a loving Black family life in the early 1900s that showcases the positive relationship of a mother and her children, and their striving to prosper as a Black community in the face of bigotry and hate. Credited for being one of the early contributors of the Harlem Renaissance, *Rachel* is an eloquently spun tale of Blackness that is all too often hidden in plain sight.

As Director, it is my goal to honor and uphold Grimké's transcending work through this reading.

Sincerely,
Tanika Baptiste



Welcome!

On January 20th, a shining voice was raised, one of hope, inspiration and vivacity. Amanda Gorman's "The Hill We Climb" (which Tanika quotes in her Director's Note on the previous page) concludes by reminding us not only of who we are, but who we could be:

"The new dawn blooms as we free it.
For there is always light,
If only we're brave enough to see it.
If only we're brave enough to be it."

The kindness and compassion of our South Bay Musical Theatre community proves that **you** are the light; that you value the strength and importance of art in the South Bay. Your generosity has been incredible. Your enthusiasm – as we turned to a virtual theater platform – has been unwavering. We are beyond grateful and will continue to shine.

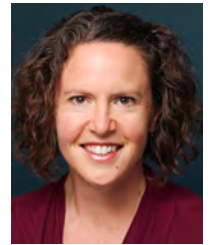
Following the conversations related to the Black Lives Matter movement in early summer 2020, I realized my knowledge of

Black writers was lacking. I knew of Langston Hughes, August Wilson, and Zora Neale Hurston, but had never studied them in depth. My readings expanded into Lynn Nottage, Dominique Morisseau, and Angelina Weld Grimké.

When I read Grimké's play, *Rachel*, I knew we needed to add her voice to our repertoire, and I am grateful to Tanika and this cast for bringing this story to life.

As we look ahead to the future, we want to celebrate and amplify all voices. Artistry inspires empathy. Empathy nurtures community. Thank you for joining ours.

With appreciation,
Sara K. Dean
Executive Director



CONTRASTS
in the world of THEATRE

TWO YOUNG POETS:
Angelina Grimké
Amanda Gorman



Cast of Characters

in order of appearance in the script:

Rachel Loving..... Anna Marie Sharpe
 Mrs. Loving Elizabeth Jones
 John Strong..... James Glass
 Tom Loving..... Jourdan Olivier-Verde
 Jimmy Régine Danaé
 Little Mary/Jenny (understudy, Rachel) Janel Chanté
 Little Louise/Edith (understudy, Mrs. Lane)..... Charlotte Christien
 Little Nancy/Martha..... Régine Danaé
 Mrs. Lane Ammy Joseph
 Edith (voice over)

Production Staff

Box Office, House Manager, Volunteer Coordinator Diane Hughes
 Casting Director..... Vinh G. Nguyen
 Communications Assistant Kama Belloni
 Costume Designer Y. Sharon Peng
 Director Tanika Baptiste
 Facilities Director Jeffrey P. Henson
 Graphics, Marketing, Program, Video, Web Manager Doug Hughes
 Producer..... Sara K. Dean
 Props Coordination & Delivery..... Barbara Heninger
 Technology Director Dan Singletary
 Stage Manager..... Megan Reed
 Workshops Coordinator Janet Miller

Synopsis of Scenes

Time: The first decade of the Twentieth Century

Place: The living room in the small apartment of Mrs. Loving in New York City.

ACT ONE

October 16

ACT TWO

October 16, four years later

ACT THREE

One week later

There will be a two-minute break between Acts One and Two,
 and a five-minute break between Acts Two and Three.



Our Mission

South Bay Musical Theatre strives to provide high-quality entertainment by bringing together a diverse group of participants in an inclusive, collaborative, and nurturing environment. As we share our passion for Theatre Arts, we endeavor to leave a lasting, positive impression upon our community.



Noteworthy Entertainment

Join us after the show



Artistry, Race, and Motherhood: a special post-show Talkback session Friday, January 29

Immediately following the opening night presentation of ***Rachel*** on Friday, January 29, director Tanika Baptiste will moderate a panel discussion Talkback featuring professional actresses Tracy Camp, Tossie Long, and Kathryn Smith. (See biographies on pages 14-15.)

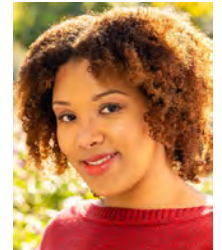


Meet the Cast



Janel Chanté (*Little Mary/Little Jenny; Rachel understudy*) Born and raised in the Sacramento area of California, Janel Chanté found her passion for acting in her late adolescence prompting her to attend Academy of Art University where she recently received her BFA in Acting. There she has performed in musicals and showcases, *Drowsy Chaperone*, *In the Heights*, *Here's To the Ones Who Dream*, and *No One Is Alone*. Post-graduation, she has played a lead role in the short film *My Sister's Soul* and booked commercial work for the applications and websites *Cherie* and *TikTokData.com*. She is also a singer recently releasing her top two singles *Queen* and *Play* as well as helping direct the vision of her recent music video for her song *Queen*. She looks forward to performing in *Rachel* and believes it is a very enlightening play showcasing perseverance through hardships faced in the African American community during the early 1900s and believes it is relevant to our modern day.

Charlotte Christien (*Little Louise/Little Edith; Mrs. Lane understudy*) is a creative performer based in Atlanta. Although originally from Alabama, for more than seven years she lived and studied performance in the Bay Area. She has studied film and theatre at American Conservatory Theater, Berkeley Repertory Theatre, and Dell'Arte International. Charlotte has a passion for crafting visual stories using film, music, theater and dance. Previously, Charlotte has worked with Bay Area Children's Theatre (*Elephant & Piggie: We're in a Play* and *She Persisted: The Musical* world premiere); Tri-Valley Repertory (*The Hunchback of Notre Dame*); Ubuntu Theatre Project (*Dance of the Holy Ghosts*); Theatre Rhinoceros (*Georgia*); and African American Shakespeare Company (*A Midsummer Night's Dream*). "I am excited to work with this talented cast and crew on such a profound work of art," she says. "What a gift to share this art from Angelina Weld Grimké."



Régine Danaé (*Jimmy/Little Nancy/Little Martha*) is excited to be performing in her first production with SBMT as Jimmy in *Rachel*. Régine, a recent graduate of Sonoma State University with degrees in Biology and Theatre Arts, has appeared as Bulrushier in *Bulrushier*, Ellie in *Sunday On the Rocks*, and Ophelia in *Hamlet*. Working currently as a marine biology educator, Régine is overjoyed by the opportunity to share her passion again.

James Glass (*John Strong*) is making his South Bay Musical Theater debut as John Strong in *Rachel*. Locally, he has performed in *The Wiz* with Sunnyvale Community Players, and in *Sweat* as Evan at the Pear Theater in Mountain View. He was last seen on the virtual stage as Jackson Moore in *Smart People* with Contra Costa Civic Theatre. James sings gospel and R&B, and performed in Juke Joint Jukebox with North California Arts in 2019.



Elizabeth Jones (*Mrs. Loving*) is humbled to be a part of bringing *Rachel* to the virtual stage at SBMT. Elizabeth grew up in the Bay Area and is a graduate of Howard University with a Bachelor of Fine Arts degree in Theatre Arts. She was recently seen as Miss Shields in *A Christmas Story* (Berkeley Playhouse) Radio in *Caroline or Change* (Ray of Light) and Motormouth Maybelle in Bay Area Musical's production of *Hairspray*. Some other theatre credits include Lady O in *The Right Note* (Spare Stage),

Cassandra in *Vanya and Sonya and Masha and Spike* (Contra Costa Civic Theatre), Darlene in *Dance of The Holy Ghosts* (Ubuntu Theater Project), Deloris Van Cartier in *Sister Act!* (Berkeley Playhouse), and Ronnette in *Little Shop of Horrors* (Contra Costa Musical Theatre). Elizabeth sends love to her daughter Caira and thanks God, family, and friends for their support. Follow her on Instagram @elizasenoj.

Ammy Joseph (*Mrs. Lane*) is a San Francisco native with a B.A. in drama from SFSU, who is delighted to be working with SBMT. She was bitten by the theatre beast in elementary school, infected through high school, and transformed with the hip-hop, poetry, theatre group Colored Ink after completing BRAVA Theatre for Women in the Arts' Running Crew program. Miss Joseph's commitments extend beyond the stage to inclusion for all and advocacy for people with disabilities. Annually, she emcees the California Youth Leadership Forum, where she enjoys engaging the audience and bonding with her younger, differently abled community. Some of her credits include: *God of Carnage*, hosting CCSF's *IDTV*, *Jive*, *The Children's Hour* and numerous original plays written by Colored Ink. Presently, she is working on a comedy act. Check out ammyj415.weebly.com and linkedin.com/in/ammy-joseph. Thank you all for keeping theatre alive!



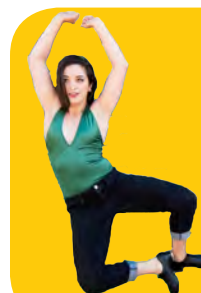
Jourdan Olivier-Verde (*Tom Loving*) is pleased to make his SBMT debut! He is an east coast transplant who's been living in California since 2015. Jourdan has recently been seen performing with theatre companies throughout the Bay Area, including 42nd Street Moon, 6th Street Playhouse, CalShakes, African American Shakespeare Company, Marin Shakespeare Company, and Bay Area Musicals. Prior to moving to California, he received a Hallam Award for Outstanding Lead Actor for his performance of Walter

Lee in *A Raisin in the Sun*, and he was a regional finalist for the KCACTF Collegiate Theatre Awards. He received his training as a Theatre Minor at Howard University, and in conservatory at the American Academy of Dramatic Arts – NY, and International Academy of Film and Television LA with a winter session at Cours Florent in Paris. Jourdan is pursuing a Master of Liberal Arts in Extension Studies with a concentration Creative Writing and Dramatic Arts at Harvard through the joint degree extension program. In addition, he's a teaching artist who has honed his skills teaching students from Marin County, Sonoma County, and San Francisco Unified School Districts with the African American Shakespeare Company as well as Handful Players and Marin Shakespeare Company (where he was recently appointed to the Board of Directors and serves as Co-Chair of their BIPOC Alliance Council to address racial equity and justice in the theater community). He is extremely grateful to Superwoman Director Tanika Baptiste, as well as the immensely talented cast and crew, for this opportunity to tell this beautiful and timely story!

Anna Marie Sharpe (*Rachel Loving*) is a mother, actor, director, and writer in the Bay Area. Recent credits include *Unstable Connection*, and she was also cast in Berkeley Rep's *The African Mean Girls Play* as an understudy prior to the COVID-19 shutdown. Anna graduates with a BA from UC Berkeley this Spring from the Theater, Dance, and Performance Studies department. She is currently working on directing a production of *Las Pajaritas* at UC Berkeley's oldest student-run theater company, Barestage.



Go into your dance!



Each month, SBMT's eStudio plays host to Francesca Cipponeri, who leads a virtual Tap Dance workshop and Michael Saenz, who leads a Jazz Dance workshop. Both are held on Saturdays. For info, please visit SouthBayMT.com/estudio.



South Bay's got plays!



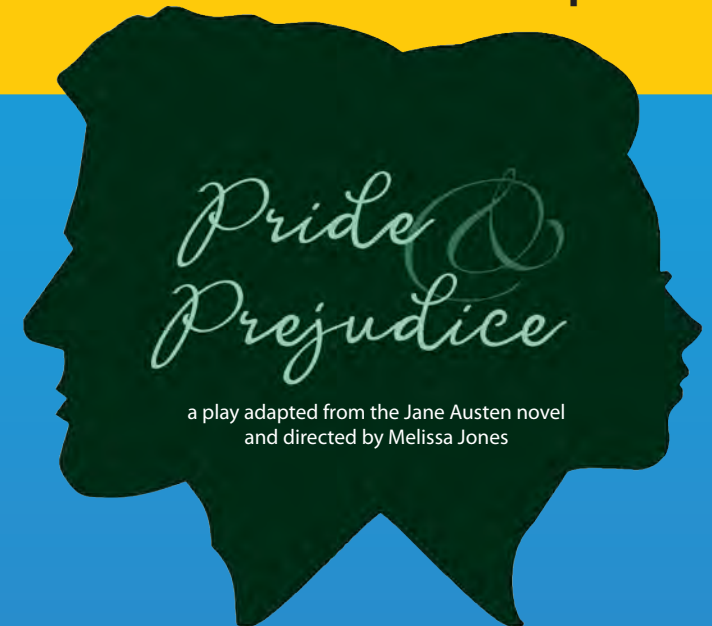
Since last May, South Bay Musical Theatre has pivoted from fully staged musicals to online play productions—along with concerts, lectures, interviews, panel discussions, films, workshops, and game shows. Pictured here are the Readers' Theatre plays we've produced in the eStudio for your entertainment, enrichment, enlightenment, and enjoyment.

If you like today's production of *Rachel*, be sure to join us again for *Pride & Prejudice* in February, and *Anon(ymous)* in March. For the latest info and to make reservations, please visit our website.

SouthBayMT.com/eStudio



Join us for our next Readers' Theatre production



Co-sponsored by South Bay Musical Theatre and Silicon Valley Shakespeare, *Pride and Prejudice* is a streamlined version of Jane Austen's classic novel involving manners, courtship and relationships.



Finding a husband is hardly Elizabeth Bennet's most urgent priority. But with four sisters, an overzealous match-making mother, and a string of unsuitable suitors, it's difficult to escape the subject. When the independent-minded Elizabeth meets the handsome but enigmatic Mr. Darcy, all feelings of attraction are muted by his pride and her prejudice. As their worlds keep colliding, their attraction increases. But they first must overcome their own weaknesses and many other obstacles before the most famous courtship in history can begin.

Two performances: February 13 and 14, 2021

Tickets complimentary, thanks to our monthly sustaining donors.

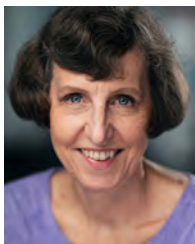
For info, go to **SouthBayMT.com/estudio**.

Meet the Staff



Tanika Baptiste (*Director*) is an award winning actor/singer based in San Diego and the Bay Area. Most recent directorial credits include *At the Wake of a Dead Drag Queen* (Theatre Rhinoceros) *Black Flag* (Common Ground Theatre) *The DesTROyErs – Trojan Women adaptation* (Assistant Director/Co-Adaptor/Costumer Southwestern College), *Fires in the Mirror* (Trinity Theatre Company). Tanika served as the Artistic Director for the first inaugural Artists 4 Black Lives Festival at Balboa Park San Diego, CA this past Juneteenth and is elated to direct *Rachel* with SBMT. tanikabaptiste.com.

Sara K. Dean (*Executive Director*) joined SBMT in 2017, and is grateful to be a part of its incredibly talented community. With the pandemic pause of 2020, SBMT has pivoted and developed virtual programs for audiences, performers and theater fans. The SBMT eStudio aims to enlighten, enrich and entertain. In return, we have deepened connections and strengthened our community. Sara earned her B.F.A. in theater from Tisch School of the Arts at New York University. She was the Company Manager for AMTSJ, and worked in Arts Administration for SJ Rep and CMTSJ. Sincere appreciation to the company of *I Am a Camera* for exploring theatre in a different way. Thank you to our wonderful sustaining donors for their support as we pause our productions during the pandemic. Your giving keeps us thriving. SouthBayMT.com/donate.



Barbara Heninger (*Props Designer*) has worked with SBMT for many years as an actor, stage hand, and Board member. This is the second show, and the first online one, for which she has designed props. She thanks RuthE Stein, Laura Carlsen, and other past props masters for showing her how! Barbara is proud to be able to bring *Rachel* to our audiences, but sad to see that so many of its issues still remain timely, over 100 years later. She hopes that we

not only listen to these voices from the past, but act together to address their concerns today.



Follow us on social media!

facebook: bit.ly/southbaymt

twitter: @SouthBayMT

instagram: [southbaymusicaltheatre](https://www.instagram.com/southbaymusicaltheatre)



Vinh G. Nguyen (he/him/his) (Casting Director) is a theatre maker, educator, and advocate. He has contributed to many productions throughout the Bay Area as an actor, director, and choreographer. Vinh has taught workshops and/or guest lectured at San Diego State University, UC Berkeley, Academy of Art University, and San Jose City College. He is currently the Casting Director and EDI Consultant at South Bay Musical Theatre and serves on the EDI Council for 42nd Street Moon. Vinh holds an MFA in Musical Theatre from SDSU and a BA from SJSU. He is an associate member of the Stage Directors & Choreographers Society and a passionate advocate for arts education and the promotion of equity, diversity, and inclusion.

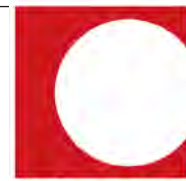
Y. Sharon Peng (*Costume Designer*) freelances in the San Francisco Bay Area and the Los Angeles area. She designed the Bay Area's premiere of *The Hunchback of Notre Dame* at HT and reprised her work for SBMT. Recent works include *She Loves Me* and *Thoroughly Modern Millie* (SBMT), *1984* (LASC), *City of Angels* (Castilleja School), and Costume Supervision for the feature film *Ride*, starring Chris "Ludacris" Bridges. Besides costumes, Sharon also does prop work and is a member of IATSE Local 706 Makeups Artist & Hair Stylist Guild, and serves on SBMT's Board of Directors. For images and information, visit her online portfolio at ysharonpeng.net.



Megan Reed (*Stage Manager*) is excited to be back with SBMT after stage managing eStudio's productions of *Book of Will* and *The Glass Menagerie* and assistant stage managing *A Gentleman's Guide to Love & Murder*. Around the Bay Area, she has worked as stage manager, assistant stage manager, soundboard operator, follow spot operator, and in various backstage positions with Sunnyvale Community Players, The Pear Theatre, Upstage Theater, and Peninsula Youth Theatre. Megan is the current Artistic Director for Upstage Theater, a completely teen-run theater company that provides opportunities for teens of all backgrounds to participate in every aspect of theater.

Thanks to our foundation donor!

Even in normal times, revenue from ticket sales covers only a portion of our operating budget. We depend on donors to bridge the gap between ticket revenue and our operating costs. Your support keeps our doors open and ticket costs affordable.



in partnership with the County of Santa Clara

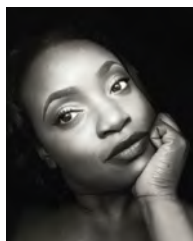
Talkback Guests



Tracy Camp is a musical theater performer, activist and mother to an 18-year-old Black son who is the motivation for most of her activism work. Past theater projects include *The Amen Corner* at AlterTheater, *Caroline, or Change* at Pacific Conservatory Theatre, *Big River* and *A Civil War Christmas* at TheatreWorks, *Jerry Springer the Opera* at Ray of Light Theatre, *Show Boat* at San Francisco Opera and the role of Bess in *Porgy and Bess* at the Aurora Fox.

Tracy currently serves on the Brain Trust for Those Women Productions and she is a member of The Coalition of Black Women Professional Theatre Makers in the Bay Area, California. A native of Oakland, Tracy is a recipient of the Equity Award from Stanford University and the Arts Enabler Award from Arts for a Better Bay Area (both for her work on representation in theater). She has also been honored with a Theater Bay Area Titan Award and she is a proud member of Actors' Equity and AGMA.

Tossie Long is an international performer artist, facilitator, and director. Nicknamed "Bone Rattler," Tossie works at the intersections of music, culture and sociopolitical issues spanning from rock and roll vocals to afro futurist productions. As a multi-hyphenate and Grammy Nominated artist, Tossie is practitioner of ceremonial music from around the world with a focus on diasporic cosmology, Tossie has voyaged to Haiti, Cuba and Benin tracing the migration of Vodou. In addition to her vocal artistry, Tossie is also the cofounder, producer and director of Bakanal de Afrique, a biannual afro-urban arts and culture festival that culminates into a full length theatre production. Tossie does not perform simply for the sake of performing, but rather, to challenge herself and to experiment with how far she can push her perceived limits. Tossie Long's performances and workshops have graced many premier avenues including Yerba Buena Center for the Arts, Stern Grove camp, Stern Grove Festival, Oakland Symphony, The Stone NYC, The John F. Kennedy Center for the Performing Arts, Harlem Museum, Power of Hope, Oakland Museum of California, UC Berkeley, UCSF, UC Merced, We Sing Conference, State of the Movement, Zoo Labs and Stanford D School, to name a few.



Kathryn Smith-McGlynn has produced a body of work that spans film, theatre, television, video games, and new media. She can currently be seen as 'Jen' in the film feature *Beautiful Dreamer* which is generating buzz on the film festival circuit and is a 2020 SFFILM selection. Kathryn also co-starred as Dr. Crawford in the dystopian sci-fi action

thriller *Mazerunner: The Scorch Trials*. Her television credits include roles on *Deputy* (FOX), *Better Call Saul* (AMC), *Grey's Anatomy* (ABC), *Hysteria* (Amazon), *Scoundrels* (ABC), *The Lying Game* (ABC Family), *In Plain Sight* (USA) *Friday Night Lights* (NBC) and others. Kathryn lends her vocal talents to the video game *Watchdogs II* and is a veteran actress of the theatre where she has performed on regional stages throughout the country including American Conservatory Theatre (San Francisco), B Street Theatre (Sacramento), Capital Stage Company (Sacramento), Shakespeare Theatre Company (Washington, DC) Perseverance Theatre Company (Juneau), Organic Theatre Company (Chicago), and many others.

South Bay Musical Theatre 2020-2021 Board of Directors



Kevin Brownstein,
Member-at-large

Ed Hunter,
Member-at-large

Dan Singletary,
Member-at-large

Dallas Carter,
Vice Chairperson

Dave Leon,
Historian

Jay Steele,
Member-at-large

Michael Paul Hirsch,
Chairperson

Jennifer Maggio,
Chief Financial Officer

STAFF:

Sara K. Dean,
Executive Director

Doug Hughes,
Marketing Director

Jeffrey Henson,
Facilities Director



Sara K. Dean



Michael Paul Hirsch



Kevin Brownstein



Dallas Carter



Ed Hunter



Dave Leon



Jennifer Maggio



Raina Parks



Sharon Peng



Steve Sammonds



Dan Singletary



Jay Steele

Thanks to our Donors

It's been a challenging year for arts organizations. We humbly and gratefully acknowledge the many friends of South Bay Musical Theatre for responding so enthusiastically and overwhelmingly to our repeated fundraising appeals. This list reflects donations from July 2019 through January 2021. We apologize for any omissions or spelling errors. Please email boxoffice@southbaymt.com with any corrections.

Monthly Sustaining Members

When COVID-19 caused SBMT to cancel its traditional mainstage season for 2020-2021, we shifted to online programming and asked our donors to become Monthly Sustaining Members. Our deepest thanks to all those who stepped up to help bridge the gap by joining the list—or increasing existing contributions.

Henry & Debbie Allhoff	Bruce Farly	Beverly Lenihan	Lois Sharp
Steve Allhoff	Cathren Foscato	Dave Leon	Dori Shimer
Stephane Alwyn	Joseph Gallo	Russell Managan	Dan Singletary
Roger & Kathleen Arno	Barbara Goetz	Mae Heagerty-Matos	Jay Steele
Jeffrey Backes	Brittany Hatch	Walter M. Mayes	Kathy Switky
Andrew Bates	Barbara Heninger	Elizabeth McClelland	Christine Wait
Dale Bates	Marie Hirsch	Mary Melnick	Terri Weitze
Rita Baum	Michael Hirsch	Diane Milowicki	Michael B. Wisper
Genie Bernardini	Robin Holbrook	Melissa Momboisse	
Christina Bertani	Christian & Jesslyn	Eyal Oren & Elizabeth	In Memory Of:
Lauren Bevilacqua	Holombo	Geurts	• Ron Biehler
Mark Beyer	Stephen Hough	Raiña Parks	• Lupe Diaz & Dianne
Christina Bolognini	Dina Jacobson	Jennifer Petersen	Lane
Douglas Brees	Michael Johnson	Donald & Flavia Polensky	• Bonnie Estolas
Rebecca Brownson	Kimberly Kay	Anastasiya Rakova	(mother/educator 39
Anita Carey	Steven Kay	Erin Reis	years)
Laura Carlsen	Joseph Kelly	Barbara Reynolds	• Dianne Lane
Dallas Carter	Katie Khera	Michael Rhone	• Edith Steele
Misty Davies	Edith Pollock Kerr	Sarah Rosenberg	
Sara K. Dean	Margo & Bill Kannenberg	Michael Saenz	
Derek Demarco	Scott Knaster	Stephen Sammonds	
Nique Eagen	Laura Leafstrand	Lea & Karl Schweitzer	



We LOVE all our donors!

We are extremely grateful to the generous donors whose contributions help make our theatre successful. To support SBMT with a tax-deductible contribution, please visit

SouthBayMT.com/donate

Donor Levels

Angel (\$2,500+)

Maurice Amado Foundation	Niblock Charitable Trust	In memory of Edith Steele
Barbara & Andy Heninger	Dan Singletary	Richard Wang

Benefactor (\$1,000 - 2,499)

Silicon Valley Creates	The Hirsch Family	Margaret Kannenberg	Steve Stubbs
Sara & Phil Dean	Doug & Diane Hughes	Henry & Marcia Lawson	Kathy & Andy Switky
Stephen & Lynda Fox	Renee Jacobs	James McGrath	Jim Tellefson

Champion (\$500 - 999)

James Bangsund	In honor of Sara Dean	The Motalygos	Dave Snow & Rosemary
Dale Bates	James DeLoach, Jr.	Roxanne & Rich Parker	Elliott-Snow
Christina S Bertani	Dick Enos	Robert W. Peterson	Jack & Sally Stallard
Lion Plumbing Supply	Beverly Hansberry	Barbara Reynolds	Dave & RuthE Stein
Barbara Brothers	James & Michelle Jackson	Lea & Karl Schweitzer	Carla Strand
Anita Carey	Gayle Joslin	David Simon & Lynn Gordon	Catherine Thermond
Sue Cyr	Walter M. Mayes		

Director (\$250 - 499)

Marjorie Alameda	Herbert Gross	Amy Milani	Cathy Rode
Henry Allhoff	Ruth Ann Groves	Joan Miller	Mr. & Mrs. James F. Rogers
Marilyn Basham	Bernard Gutnick	Dana Moran	Michael Saenz
Kama Belloni	Susan Hayward	Eyal Oren & Elizabeth Geurts	Lea & Karl Schweitzer
In memory of Christie H.	John Heather	Marge Papp	Masel Sheehan
Buzanski	Barbara & Andy Heninger	Ralph Parkman	Dori Shimer
Bob & Sue Copeland	Alan & Anita Herrmann	Raina Parks	Robert & Nancy Smith
Derek DeMarco	Stephen Hough	Carol Parris	James Stamos
Diana Doan	Dina & Neil Jacobson	John Patton	Charles Steele
Elaine Elkin	Darrell B. Jones	Robert & Sandy Peeks	Edye & Larry Stein
In memory of Bonnie	Andy Switky	Janice Penner	Tina & Brian
Estolas (mother/educator 39 years)	Russell Mangan	Laura Peterson	Braden Taylor
Lois Fiedler	Andra Marynowski	The Poncetta Charitable Fund	John Turner
Gladys Fong	Mae Heagerty-Matos	Tipu Purkayastha & Poorva	Donald Village
Diane Forsythe	Carol & Mike Megaw	Malhotra	Benton & Mary Lou White
Cathren Foscato	Mary & Robin Melnick	Rita Redfern	Michael B. Wisper
Bernie Glienke	Richard Partridge & Rachel	Patti & Michael Reed	Karen Woolard
Catherine Grellet	Michelberg Charitable Fund	Ramon Reza	
		Joyce & Bob Rhodes	

Enthusiast (\$100 - 249)

Stephen & Karen Adkins	Anatolie Babaeff	Julia Wilson Ball	Genie Bernardini
Steve Allhoff	Babb Family	David & Arlene Barraza	Carol Bevans
Stephane Alwyn	Ginnie & Jeff Backes	Dale Bates	Mark Beyer
Kathy Amerson	Janet Bailey	Andy & Marcy Bates	Richard Bothman
Roger & Kathleen Arno	Bob Baker	Kathleen Bejarano	Arlene Boyd

Enthusiast (\$100 - 249)

Doug Brees
Yvonne Brill
Rebecca Brownson
Mark & Valerie Fenwick
Zhanna Buell
Gary P Campanella
Laura Carlsen
Rod & Colleen Carlson
Kimo & Norma Carney
Dallas Carter
Karen Carter
Terri & Jim Casey
Allan & Dawn Clark
Marilyn Clawson
Gerald Clodius
Joe Colletti
Carol & James Commendatore
James Creer
Anne Cummins
E Cunningham
Jackie Daemion & Karl Belser
Ray D'Ambrosio
Adele J. Danielson
Misty Davies
Marlene Davis
Clifton Demartini
Gloria Dobbins
Marie Donner
Robert Donzelli
April Durrett & Matt Reilly
Barbara Dyer
Zina Lou Dyer
Nique Eagen
John Edgerton
Charles Eggen
Judee English
Lawrence L. Fargher
Bruce & Catherine Farly
Mary Feldman
Doreen Finkelstein
Martha Fisk
Ed Fox
Margaret Franklin
Ronda Fraser
Sandra Gabe
Joseph & Maria Gallo
Shirley Gano
Sonja Goedde
Barbara Goetz
Loretta Goglio
Greg Goodhue
Angela Govig
Matthew Hall

Norma Hammons
The Heintz Family
Donna Hendryx
Patti Henry
Jeffrey & Margaret Henson
Marie Hirsch
Robin Holbrook
Parker Hough
Allan Hurst
Audrey & Mel Inouye
Rafael Irvine
Jonathan Jacobson & James McKibben
Maria Jacobson
Pamela & Edward Jajko
Ray James
Marc & Rebecca Jedel
Irene & Don Jenkins
Terry Jenkins
Jennie Johnson
Marjorie Johnson
Michael Johnson
Wendy Jones
Thea Jorgensen
Carl Jukkola
Sam Kahn
Shirley Karabian
Stan Karp & Cathy Baird Fund
Beth Karpas
Kimberly Kay
Steven Kay
Kaye-Panttaja Family
Joe Kelly
Robert Kelly
Edie & Doug Kerr
Katie Khera
Hans Kiel
Ed & Ellie Kiss
Adele Salle & Marvin Kohn
The Kolb Family
Judi Kolbmann
Kayvon Kordestani
Kathy Kriesse & Tad Hogg
Mary Kuperman
Sylvia Kyle
Tom & Teddy Lancaster
Robert & Clare Landry
In memory of Dianne Lane
Susan Latshaw
Law-Sun Community
Foundation
Janice LeFevre
Bev & Philip Lenihan

Dave Leon
Lisa & James Litchfield
Neal & Sonja Locke
Charles Loretta
Helen Lott
Audry Lynch
Thomas Maiden
Louis & Jean Marcolina
Jeff & Tracy Marr
Carolyn Mauro
Terrence McCambridge
Elizabeth McClelland
Antoinette McMillin
Rosalie Mechanic
Joan Meyer
Joan Miller
In memory of Howard Miller
Diane Milo
Greg Mischou
Melissa & Rick Momboise
Nora Monette
Barbara Morgan & Family
Carol Doup Muller
Barbara V. Murphy
Eldred Nelson
Cyndee Newick
Fred Niemann
Glenn & Elizabeth Overstreet
Ron Packard
Stephanie Palmieri
Gwyneth Price Panos
Alice Patrick
Jennifer Peck
Carol Peske
Jen Petersen
Robert & Bonnie Peterson
Rob & Dona Pio
Donald & Flavia Polensky
John & Rosalie Price
Dibyaduti Purkayastha
Owen & Vickie Purser
Roberta & John Ray
Esther & Joseph Rechenmacher
In honor of Erin Reis
Reggie Reynolds
Bob & Joyce Rhodes
Michael Rhone
Janet Rohrer
Sarah Rosenberg
Joan Rubin
Marian Rule
Elva Russo

Leila Saeed
Stephen & Teresa Sammonds
Shirpa & Simon Sampson
Portia Saul
Virginia Schmidek
Grace Schmidt
Esther Selk & Andrew Conroy
Christie & Roy Shackel
Maiko Shaw
Janet Sloan
Brian Smith & Lisa Egert-Smith
Roger L. Smith
George Snell
Catherine Snider
Annette Snyder
Amita Sophonthirathana
Teresa Spencer
Mary Stamps
Chuck Steele
In honor of Jay Steele
Dave Stein
Jay Sternin
Marcia Sternin
Julie Stokes
Bob Sunshine
Thomas Swidler & Kari Kindem
Julie & Dan Switky
Linda Taylor
Nancy & Robert Tepperman
Peter & Kathleen Tobias
Eric Tooley
Rebecca Toton-Quinn
Karen Trayer
Jill Urbina
Kent Vincent
Christy Wait
Laurie Waldman
H Waterfield
William Waterfield Jr
Jo Anna Watt
Terri L Weitze
Anne Welker
Richard & Carol Wells
Carolyn D. Whipple
Jane Woodbeck
Lynn Woolhouse
Kathleen Wright
Nika Wynn
Kenneth Yamamoto
Angela Yeung
Irwin Zook

(continued on next page)



It takes many hands to make theatre magic happen!

South Bay Musical Theatre is a non-profit organization that is largely driven by its volunteers. Even now during this "pandemic pause," we're always looking for folks who like to share their talents in a variety of ways:

- | | | | |
|---------------|----------------|---------------|----------------------|
| ❖ Ushering | ❖ Costumes | ❖ Spotlights | ❖ Event planning |
| ❖ Concessions | ❖ Set building | ❖ Stage crew | ❖ Fundraising |
| ❖ Hospitality | ❖ Painting | ❖ Videography | ❖ Grant writing |
| ❖ Box office | ❖ Props | ❖ Photography | ❖ Board of Directors |

Whether you're already skilled or just keen to learn, we have opportunities for you to join the fun of live musical theatre. If you're curious, please email us at chairperson@southbaymt.com, call us at 408-266-4734, or go online at southbaymt.com/join-us/volunteer to let us know about your passions.



Set builders are always welcomed. Not handy with tools? We'll train you!



Learn how to run spotlights or the sound board—or join the fun backstage on deck crew.



Sell snacks or volunteer as an usher, and see the show for free!

Friend (up to \$99)

Stephen Adkins	Connor Bui	Amy Day	Melissa Gilbert	Jackie Hughes
Roya Afshar	Janet Buonocore	Sylvia Dayan	Gregory Giska	Karen Hyde
Diana Aldrich	Leticia Burton	Karen Dehart	Barbara Goetz	T. Steven Ichishta
In honor of Almost Maine	Andrew Calabrese	Marie Kay Delaney	Henry Goldenberg	Tami Imai
Cast & Crew	Susan Camp	Maggie Deloach	Robert Gong-Guy	Katherine Ingold
Stephane Alwyn	Jasmin Cauty	Janet Quinn Dennis	Shawna Gonzales	Cynthia Jackson
Michael Anderson	Roberta Caplan	Jerome DeRuntz	Susan Goodrich	In honor of Dina Jacobson
Diane Andrews	Gayle Carlile	Carole Detrick	Robert Gordon	Claire Jaster
Elizabeth Ardizzone	Laura Carlsen	Art & Irma Diaz	Yulia Gorman	In honor of Sruthi Jayakumar
Sharon Arit	Maryann Carnevale	In memory of Lupe Diaz & Dianne Lane	Lois Gragnola	Andrea L. Johnson
Anthony Armenta	Doug Carothers	Bernard Director	Amy Griffith	Eric Johnson
Claire Arnold	Laura Carr	Jodi Disario	Susan Grimes	Marisa Johnson
Charlotte Aschoff	Barbara Casalegno	Janice Dorst	Bernice Gudel	Phil Johnson
Elizabeth Aston	Jacqueline Cathcart	Julie Dorst	Carol Gutow	Troy Johnson
John & Eryl Aynsley	Shane Caya	Tiffany Cesarin	Ellen Haas	Tiffany Jousselein
Jillian & Matt Bader	Marcia & Jan Chaiiken	Libby Dutrow	Joan Hahn	Wilkes Joy
Stephanie Bailey	Vincy Chan	Nique Eagen	Marilyn Haines	Sheila Kamp
Laurel Barklow	Cheri Chapman	Andy Eccles	Jim Hall	Stuart Kane
The Bates Family	Shirley Chappell	Roxie Edwards	Susan Haller	Stan Karp
Rita Baum	Dee Chase	Mary Egan	Reg & Barbara Hamer	Richard Kaufman
Barbara Beal	Wendy Chen-Shen	David Eisbach	Marge & Ed Hand	Steve & Carol Kay
Kim Beals	Rosemary Chivers	Janet Elliott	Judi Hanley	Pierce Keating
Tina Beaudry	Brennon Church	Gerald Engbretson	Katherine Hansen	Julie Keeney
Victor Beckman	Jonell Cipponeri	William Ereneta	Lynne Hanson	John & Jan Keifer
Annie Bedichek	Geoff Clark	Andrew & Sandra Faber	Judy Harper	Justin Kerekes
Homer Bell	Rosalee Clarke	Barbara Fairlie	Karen Harrell	Brian Kim
Yelena Belorousou	Nancy Claunch	Eric Farraro	Angela Harrington	Colette M. Kirk
Trixie Bentley	Kathy Cleary	Frank Farris	Timothy Harrington	Gregory Kirk
Christine Bernardini	Lenore Cohen	Karen Fear	Alyson Harrold	Nina Klepac
Deborah Best	Walt Cook	Robert Feigelson	Benjamin & Brittany Hatch	Elizabeth Klueck-Olivas
Lauren Bevilacqua	Elyse Cook	Howard Feinberg	Susan Hauser	Arleen Kluger
Jill Bicknell	Roy Cook	Lucy Feng	Janet Haver	Scott Knaster
Joyce Birth	Elizabeth Cooper	Gavri Fernandez	Christina Hawkins	Elaine Knoernschild
Jane Bishop	Kevin Cornelius	Karen Fihn	Eric Hayton	Barb Kochman
Beverly K Bishop-York	Amelia Coronel	Elizabeth Finkler	In honor of Barbara Heninger	Jean Krcik
Colleen Block	Jennifer Cousins	Diane Fontaine	Francine Hileman	Lisa Kunze
Heinz Bodeker	Aaron Cowles	Anne Foran	Frederick Hines	Amelia Kusar
Ann Bolhorst	Libby Cox	Joan Forte	Deanna Hisaw	Jennifer Kutch
Christina Bolognini	Shelby & Clint Cox	Sylvia Fortun	Gerald Hoffman	Emerald Lai
Rita Boren	Katie Coyle	Lois Fraine	Jim & Margaret	Virginia Lai
Sandra Bouja	Kathleen Craig	Janice Frazier	Hobenshelt	Russell Lash
Jane Bradley	Sybil Cramer	Deborah Freeman	In honor of Robin Holbrook	Wendie Lash
Jason Bram	Bonnie Cullen	Evelyn Gaertner	Bobbi Holly	Richard Lavenstein
Robert Brock	Caia Brookes	Kay Gallagher	Christian & Jesslyn Holombo	Kurt & Laura Leafstrand
Cheyanne Brown	Marlene Brown	Arthur Dandurand	Christine Levine	Darlene Lee-Young
Martin Brown	Nelson Brown	Susan Dansker	Meg Liggett	John & Mary Lemons
Kevin Brownstein	Beverly Bryant	Barbara Dariano	Ellen Lim	Nancy Leonard
Judith Bryer	Joan Ann Bugado	Jean & Phil Darnall	Phyllis Lindquist	Sally LeSchofs
		Diane Davidson		Christine Levine
		Stanley Davies		Meg Liggett
		David Davison		Ellen Lim
		Gregory Dawsons		Phyllis Lindquist
				Doris Livezey

Friend (up to \$99)

Roger & Marge Lobbes	Destany Morgan	Linda Poncetta	Marilyn Sell	Betty Verhoeven
Charles Louis III	In honor of Sasha	Jenn Poret	Ed & Kerli Sengstack	Clare Vickers
Allan Low	Motalygo	Charmaine Powell	Pat Shank	David Vickrey
Joshua Lubs	Juan Moyoli	Robert Pruitt	Lois Sharp	Catherine Villa
Jean Ann Luckhardt	Ronald Munekawa	Alana Purchase	Ronald Shipper	Maxine Voight
Richard Lukens	Rose Myers	Bonnie Radding	Olga Shtigluz	Richard Voss
Amy Ly	Kim L. Nameny	Esther Ramonda	Paul Shumaker	Marian Waldman
Grace Maes	Rosemary Neff	Nancy Rasmussen	Robyn Siebenthal	Pamela Wales
Rena Mandey	Sue Ellen Nelsen	Sally Ravel	Judy Simon	Clara Walker
Mary Lou Manlove	Loan Nguyen	Erin Reis	Michael Singh	Richard Walker
Athene Mantle	Vinh G. Nguyen	Robert M. Renfer	Nancy Siverson	Richard Wang
James Marshall	Kay Nichols	Helen Revlock	Angelina Sklyar	Shannon Wass
Maggie Martin	Anne Noller	John Ribble	Dorothy V. Smith	Louise Webb
Sharon Martin	James Oh	Jean Ridley	Kathy Smith	Susan Weiner
Lauro Martinez	Norm Ohtaka	Ingrid Rittenberg	Robert & Nancy Smith	Barbara Weissman
Louis Martini	The Jay Steele Fan Club	Donna Roberson	Bernice Smoll	Karen DeHart
Mark Mason	Diane Okusako	Mary Rodarte	Richard Sneiderman	Brad Wetmore
Loretta Matheson	Molly Olivas	William Rodriguez	Helene Snyder	Stephen White
Loretta Matheson	Bert Olson	Iren Roldan	Betty Soares	Robert Whitten
Wendy Matthews	Shirley Olszewski	Anita Romero	Linda Solis	Kathryn Wiese
Pamela Maxwell	The Jay Steele Fan Club	Peter Rose	April Spurgiesz	Leroy Wilkinson
C. Gail Mayer	Jenny Ortez	Robin Rosenberg	Carole Stanfield	Michael B Wisper
Doug McGrath	Cassie Ott	Vicki & Bruce Rosenthal	Gloria Stanley	Vicki Witkovski
Heidi McLean	Jennierae Paker	Anonymous	Diana Lynn Steele	Harvey Wolfe
Linda Medeiros	Mitzi Palmer	Joanne Rudinskas	Al Stewart	Shirley Woods
Boba Mehic	Gwyneth Panos	Norma Ruiz	Mike & Lucille Story	Renee Woolard
Julie Mehta	Amy Papazian	Assaf Sagi	Robert Stoudt	Roberta Yamagami
Diane Melone	Mary Ann Parks	Randy Sahae	Barbara Sturges	Simone Yecny
Aisha Memon	Kelly Pasquale	Dianne Saichok	Elizabeth Stutz	Sharon Yee
Joyce Mendel	Cheryl Ann Passanisi	Brianna Stutzman	George Yefchak	Virginia Ynegas
Sylvia Metz	Beverly Pastorino	Craig Salmond	Mary Sunseri	Diane Young
Karin Meyer	Marilyn Paulsen	Miriam Salo	Noelle Tardieu	Jennifer Petersen
Deborah Miller	Kay Paumier	Madeleine Samson	Judi Thayne	Shu Ju Yu
Janet Miller	James Pearson	Pamela Sander	Stacie Thiel	Elizabeth Zambetti
Joyce Miller	Jenae & James Pearson	Karen Sanguinetti	Julia Thomas	Raelene Zenti
Ruth Miller	Hughes	Janet Sauer	Jeanne Thomas	Jingjie Zhan
Karen Miyamoto	Sheryl Peck	Helen Scheel	Cynthia Thompson	Marie Zigon
Zain Modi	Stephan Pellissier	Deanna Scheler	Mark Thompson	Carl Zon
Nicholas Moline	Don Nguyen	David Mister	Laura Ann Tindall	In honor of all the people
Nick Moline	Avraham Perahia	Claudia Schinn	Alessandro Toso	that dedicate their en-
Katherine Moore	Will Perez	Dana Schroeder	Nancy Tronson	ergy & talent to enable
In memory of Shirley Moran	Julie Peterson	Libby & Joel Schroeder	Cheryl Trotter	others to participate
In memory of Shirley Mercer Morgan	Nancy Peyton	Joel Schroeder	Janet Truman	in high quality com-
	Russ & Carol Philpott	Lorraine Scott	Diana Turner	munity theater!
	Lydia Polidi	Ann Seid	Carol VanWyk	

**Celebrating
our 58th
season!**

South Bay Musical Theatre
a 501 (c)(3) non-profit organization
P.O. Box 700215, San Jose, CA 95170
408-266-4734
www.SouthBayMT.com



Noteworthy Entertainment



Palo Alto Players presents a fully-staged, streaming production of the Off-Broadway musical *THE LAST FIVE YEARS*. This intimate and alluring musical by modern theatre icon Jason Robert Brown chronicles the five year relationship of a young couple whose path takes them in different directions – in more ways than one.

THE LAST FIVE YEARS is available as an on-demand video stream, from January 29 through February 14, 2021. Streaming tickets, starting at \$25 per household, are on sale now at paplayers.org or by phone at 650.329.0891.

**LIVE (STREAMING)
FROM THE BARN**

JAN. 22 - 31, 2021

\$20 PER DEVICE

LOSALTOSSTAGE.ORG

LASC presents *Ann* by Holland Taylor ... January 22-31

Iconic, heroic, and hilarious. Texas Governor Ann Richards had a heart as big as the state from which she hailed, a wit to rival the greats, and an enduring passion for fair play. Neither partisan nor political, Ann is pure entertainment – an uplifting tribute to this legendary personality whose capacity to inspire burns even brighter today. *Ann* features award-winning Bay Area actress Judith Miller in a powerhouse one-actor performance. Directed by Gary Landis, the production will include all the bells and whistles of a fully designed production: newly-constructed set, lighting, sound, props, and costuming, and will be live-streamed using five cameras.

South Bay Cabaret

Wednesday, February 24 at 7:30 pm

CONTRASTS

CLASSIC vs CONTEMPORARY SHOW TUNES



In keeping with our "CONTRASTS" theme for January / February eStudio programs, each of our performers for this event will perform one classic show tune and one contemporary show tune, in a cabaret that should please all. This gives us a chance to contrast the changes in culture in Musical Theatre from yesteryear vs. today. Performers include Kimberley Anjal, Melody Chen, Grace Colon, Aleisha Lew, Melissa Momboisse, Natalie To, Romelo Urbi, and Cindy Van—all of whom recently completed Vinh G. Nguyen's "Beyond the Book" Audition workshop series.

Complimentary admission, thanks to our monthly sustaining donors.

To reserve your spot, go to:

SouthBayMT.com/eStudio



Noteworthy Entertainment

Coming up in the eStudio



*Who will win this year's "Bless Your Heart" award? Learn what SBMT is planning for 2021 and beyond at our annual Membership Meeting on Feb. 7.
(Bear designed by Elyse Cook of Cook's Curious Crafts.)*

FEBRUARY

- Tues., Feb. 2A Muse Event: ***Name That Show Tune*** with Kayvon Kordestani
Sun., Feb. 7***Annual Membership Meeting***
Tues., Feb. 9Broadway By The Decade: ***Underappreciated Musical Gems*** with Ron Susek
Sat., Feb. 13Skills Workshop: ***Tap Dance*** with Francesca Cipponeri
Feb. 13 and 14Readers' Theatre: ***Pride & Prejudice***, by Jane Austen, co-produced with Silicon Valley Shakespeare
Sat., Feb. 20Skills Workshop: ***Jazz Dance*** with Michael Saenz
Wed., Feb. 24South Bay Cabaret: ***Classic vs Contemporary Show Tunes***

MARCH

- Tues., Mar. 2A Muse Event: ***Musical Theatre Trivia*** with Walter Mayes
Sat., Mar. 13Skills Workshop: ***Tap Dance*** with Francesca Cipponeri
Mon., Mar. 15Broadway By The Decade: ***Musicals of the 80s*** part 2 with Heather Kenyon
Wed., Mar. 17South Bay Cabaret: ***Sondheim Turns 91***
Sat., Mar. 20Skills Workshop: ***Jazz Dance*** with Michael Saenz
Fri., Mar. 26Readers' Theatre: ***Anon(ymous)***, directed by Vinh G. Nguyen

PLUS MORE THAT WE CAN'T ANNOUNCE YET!

NOTE: All events are subject to change without notice.

Check **SouthBayMT.com/estudio** for times and reservations.